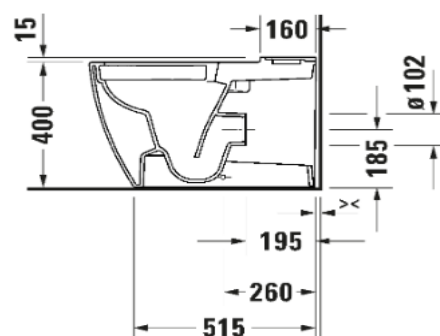
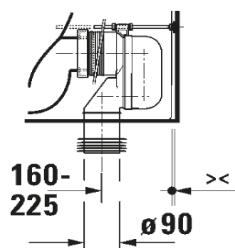
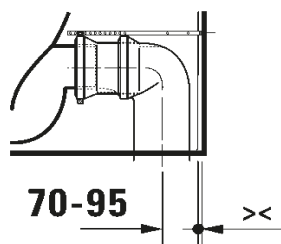
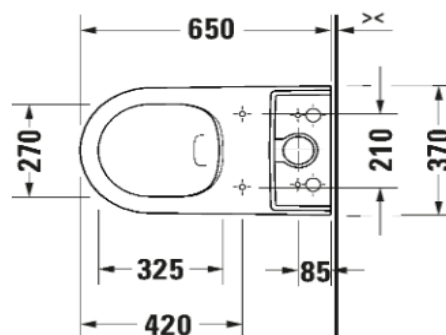
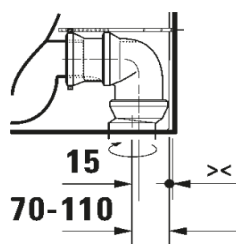
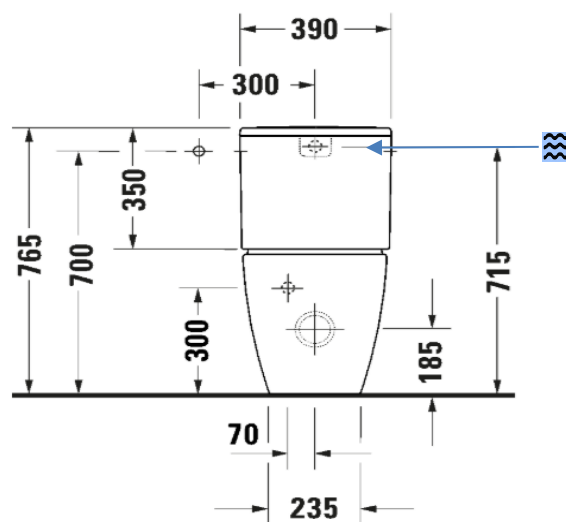


# DURAVIT ME by Starck

Duravit Me By Starck Rimless BTW Toilet suite and connector, centre back water inlet

(Requires soft close seat 020.19)

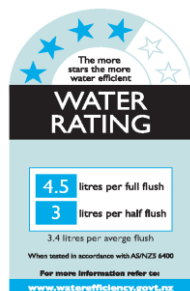
2005.09



Above connector sold  
Separately, if required  
#8990250000

10 Year warranty / 5 years on labour (Vitreous China)

WELS Rating: 4 Star - 4.5/3 L



Max. Operating Pressure: 500Kpa.

Min. Operating Pressure: 50Kpa.

*Pipework must be flushed before installation*

*Please install as per manufacturers instructions in the box*

Due to our policy of continuous product development, the design and specification shown are subject to change without notice.

Please confirm all particulars with your sales consultant prior to purchase.

