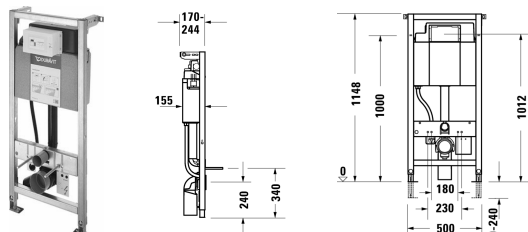


Toilet frame, integrated hygienic flush # WD1003..0080

| < 500 mm > |



Toilet frame, integrated hygienic flush	Dimension	Weight	Order number
<p>integrated hygienic flush, self-supporting, for drywall construction, suitable for panelling with plasterboards, galvanized frame, for WC ceramics with a projection of ≤ 625 mm, adjustable feet 0–240 mm, SensoWash ready, electrical front actuation, flattenings for optimal access of press tools, metre tear and center marker, tool-free assembly of the transparent service opening plate, Requirements of the leading standards of noise protection DIN 4109 and VDI 4100 can be achieved (in combination with noise reduction set # WD6008 000 000), Cistern, concealed cistern CE tested in accordance with EN14055, maximum flush volume 9L, marking of filling height, Dual flush technology, adjustable flush volume, insulated against condensation, flushing throttle for adjustment of the flow rate, Scope of delivery, pre-installation kit including power supply 100-240 V AC / 24 V DC, PE-wall-mounted toilet connection bend DN90/90, PE-wall-mounted toilet connection set DN90, wall-mounted toilet fastening set M12, mounting accessories for lightweight construction, mounting accessories for single installation, PE wall-mounted toilet reduction DN 90/110 for outlet bend, 2 cover caps, pre-installed toilet frame for wall-mounted toilet</p>			
Colors			
Variant			
	500 x 1148 mm	14.700 kg	WD1003..0080
Installation accessories			
Connecting set in combination with SensoWash Starck f, for in-wall carriers with conduit pipe for connection inside the tank			100731
Interface set in combination with SensoWash Starck f, for functional interface with DuraSystem actuator plate A2			100729
Connecting set in combination with SensoWash shower toilet seat, for in-wall carriers H=112-115 cm, with conduit pipe for connection inside the tank			100691
Wall-mounted toilet connection set, elongated, 365 mm extended connection set, Scope of delivery, flush pipe with sleeve, straight connector with sleeve, wall-mounted toilet fastening set M12, 2 cover caps, for wall-mounted toilets		0.800 kg	WD6010

Toilet frame, integrated hygienic flush # WD1003..0080

|< 500 mm >|

Noise reduction set for single installation self-adhesive, Scope of delivery, set consists of 4 pieces , for structure-borne sound isolation between installation frame and building	65 x 36 mm	0.200 kg	WD6008
Extension set 240 mm for extended height adjustment up to max . 480 mm, Scope of delivery, 2 galvanized feet, 2 plastic support brackets for toilet and bidet, mounting accessoires, for a raised floor construction		1.500 kg	WD6005
Suitable products			
Actuator plate A2, for toilet, glass white touchless, infrared-controlled front actuation, without mechanical buttons, button illumination activated by approaching the detection zone, flushing operation via touch or touchless, for surface mounted installation , Dual flush technology, operation with low voltage: 24 V DC SELV, protection class IP X4, protection category III, with coded plug connectors, Functions, odor extraction, infrared approaching sensor, hygienic flush, Auto flush, cleaning function, nightlight, locking function, battery backup, functions adjustable via remote control, Scope of delivery, installation frame, mounting accessoires, front plate glass, white	229,8 x 157 mm	0.900 kg	WD5003

All drawings contain the necessary measurements which are subject to standard tolerances. Exact measurements, in particular for customised installation scenarios, can only be taken from the finished ceramic piece.