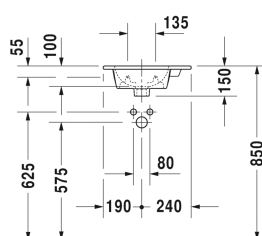
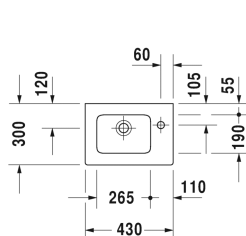


ME by Starck Handrinse basin, furniture handrinse basin #
072343..00 / 072343..41 / 072343..00 / 072343..41

| < 430 mm > |



Handrinse basin, furniture handrinse basin	Dimension	Weight	Order number
with tap platform, 430 mm			
Colors			
00 White Alpin 32 White Satin Matt			
Variant			
● with overflow	430 x 300 mm	6.800 kilogram	072343..00
● without overflow	430 x 300 mm	6.800 kilogram	072343..41
● with overflow	430 x 300 mm	6.800 kilogram	072343..00
● without overflow	430 x 300 mm	6.800 kilogram	072343..41
Sanitary ceramics with the special WonderGliss surface finish will remain clean and attractive-looking for a long time to come. When ordering WonderGliss please add a "1" as eleventh digit to the model number.			
Suitable products			
Vanity unit wall-mounted 1 door, for ME by Starck # 072343, 420 x 294 mm	420 x 294 mm		LC6272 L/R
Vanity unit floor-standing 1 door, 1 glass shelf, for ME by Starck # 072343, 420 x 294 mm	420 x 294 mm		LC6273 L/R
Vanity unit wall-mounted 1 door, for ME by Starck # 072343, 400 x 285 mm	400 x 285 mm		KT6417 L/R
Vanity unit wall-mounted 1 door, for ME by Starck # 072343, 420 x 289 mm	420 x 289 mm		BR4000 L/R
Vanity unit floor-standing 1 door, 1 glass shelf, for ME by Starck # 072343, 420 x 289 mm	420 x 289 mm		BR4400 L/R
Vanity unit wall-mounted 1 door, for ME by Starck # 072343, 410 x 289 mm	410 x 289 mm		XS4170 R/L
Vanity unit floor-standing 1 door, integrated base frame legs with height adjustment, for ME by Starck # 072343, 410 x 289 mm	410 x 289 mm		XS4440 L/R
Vanity unit wall-mounted 1 door, for ME by Starck # 072343, 410 x 290 mm	410 x 290 mm		XV4024 L/R

ME by Starck Handrinse basin, furniture handrinse basin #
072343..00 / 072343..41 / 072343..00 / 072343..41

|< 430 mm >|

Vanity unit floor-standing 1 door, for ME by Starck # 072343, 410 x 290 mm	410 x 290 mm	XV4480 L/R
Vanity unit wall-mounted 1 door, for ME by Starck # 072343, 410 x 274 mm	410 x 274 mm	DE4259 L/R

*All drawings contain the necessary measurements which are subject to standard tolerances. They are stated in mm and are non-binding.
Exact measurements, in particular for customised installation scenarios, can only be taken from the finished piece.*