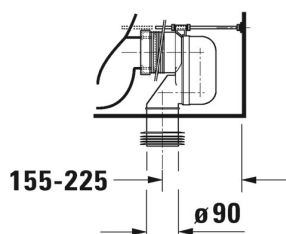
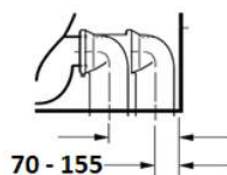
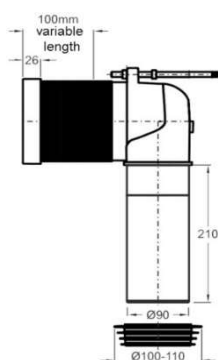
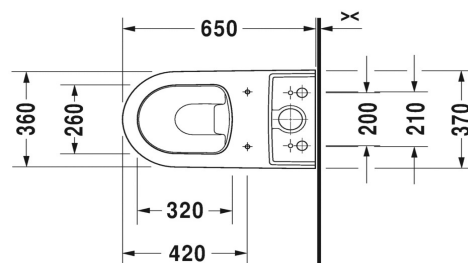
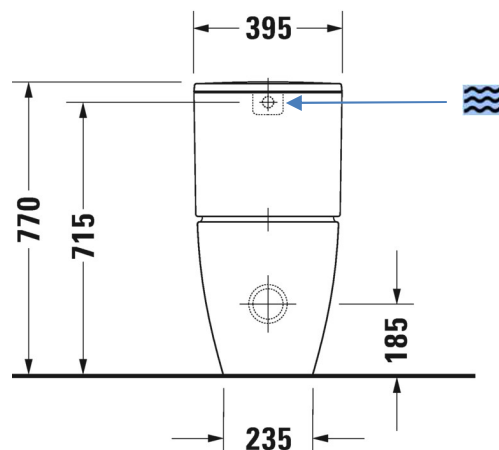


DURAVIT ME by Starck

Duravit ME by Starck, back to wall toilet suite and connector, centre back water inlet
(Requires soft close seat 020.19)

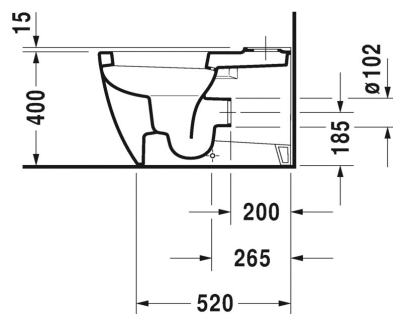
2170.09



Above connector sold

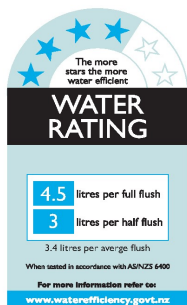
Separately, if required

#8990250000



5 Year warranty (Vitreous China)

WELS Rating: 4 Star - 4.5/3 L



Max. Operating Pressure: 500Kpa.

Min. Operating Pressure: 50Kpa.

Pipework must be flushed before installation

Please install as per manufacturers instructions in the box

Due to our policy of continuous product development, the design and specification shown are subject to change without notice.

Please confirm all particulars with your sales consultant prior to purchase.

